

ACTIVITY 12 HOW CAN WE IDENTIFY ORGANISMS?

In the last lessons, we looked at classifying or grouping different living things. Now we are going to see how keys might be able to identify different organisms.

STARTER

As she was cycling through Russia, Sarah posted this tweet on her twitter page.



SarahOuten Sarah Outen

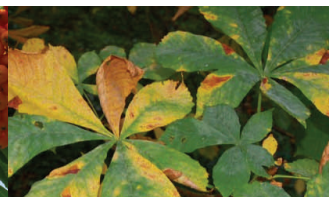
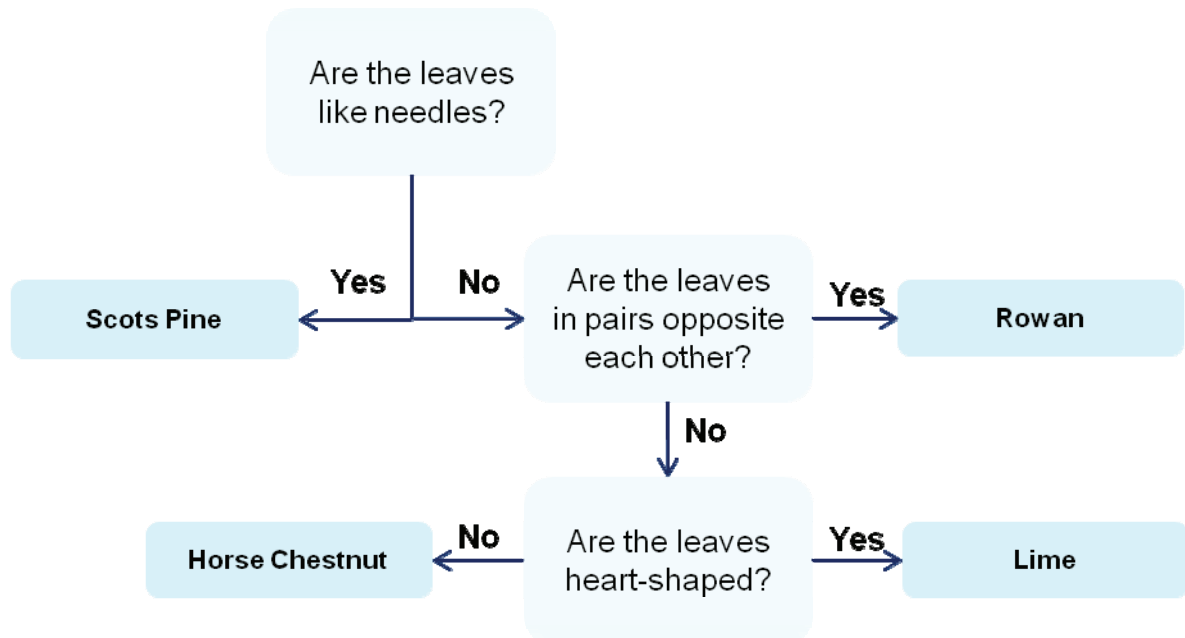
Spotted an interesting creature yday. Darkish, foxish. Size of a badger but long bushy tail. Low to the ground. Any ideas?

10 Sep

What questions could you ask Sarah to help you identify this animal?

Q1

Use the key below to identify these different trees from their leaves.



Q2

Your challenge is now to make your own *key*. In groups decide on the key questions that will help anyone identify the organisms in the photos below.

Remember that your key questions need to be about characteristics and have 'yes' or 'no' answers.

Hint: you may need to practise on some spare paper first.



Slug



Ant



Snail



Bee



Woodlouse



Spider

EXTENSION

So you reckon you can make a *key*. Why don't you have fun at home or in the school grounds and make a *key* to identify the creepy-crawlies, flowers or trees?